

# 16

T Y P E



# PROXIMITY MAP









YOUR  
RESORT  
EXPERIENCE  
BECOMES  
YOUR HOME

# YOUR RESORT EXPERIENCE BECOMES YOUR HOME

Imagine a place where the Pyramids are your backyard, where the Egyptian museum, the Fairmont and intercontinental residences are your next door neighbors, where a sense of wellbeing is all around you. Some call it a natural paradise, some call it an elegant resort, and some are fortunate enough to call it home.





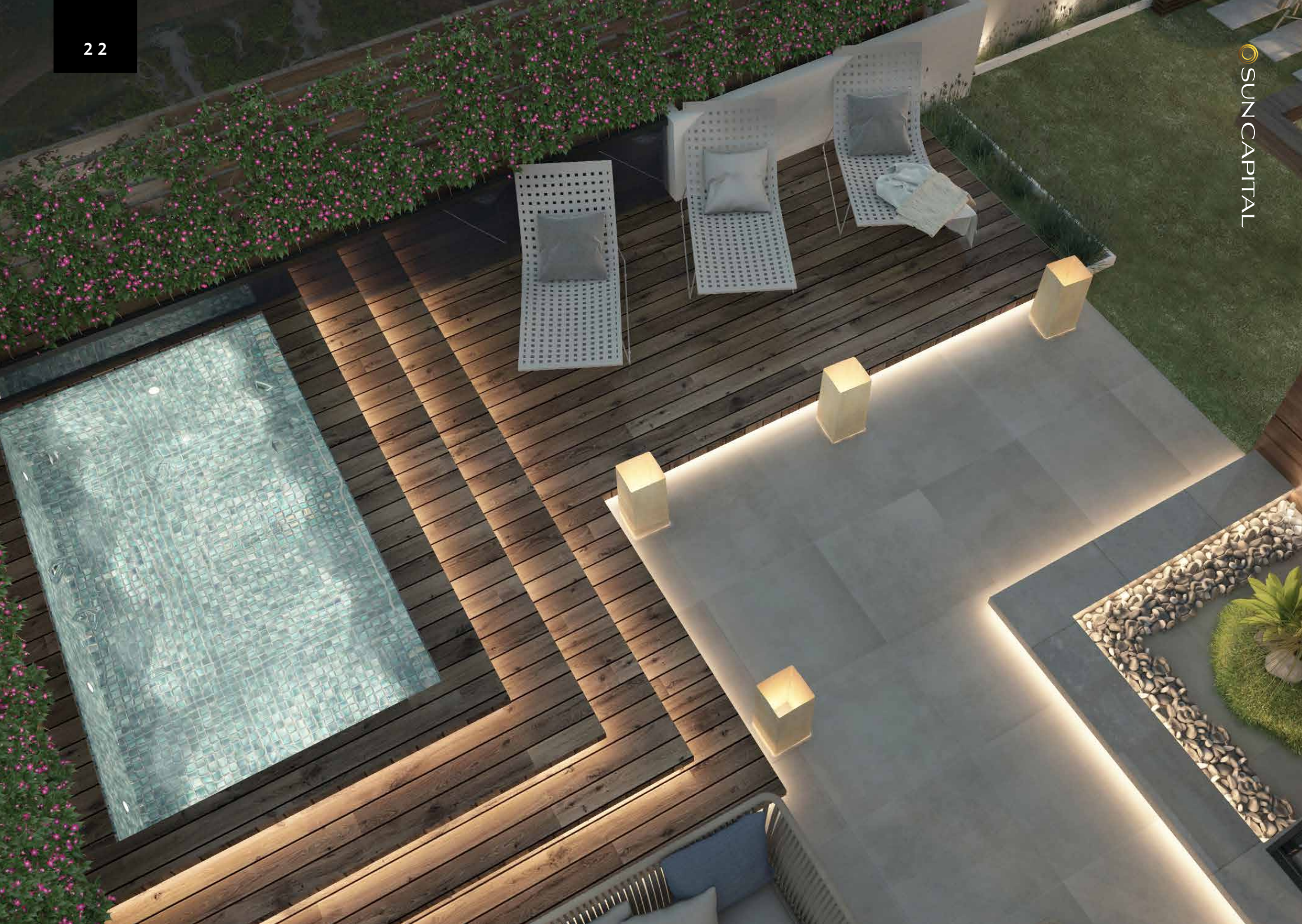
YOUR  
RESORT  
EXPERIENCE  
BECOMES  
YOUR HOME



Stretched over 557 acres in full view of the Giza Pyramids, Sun Capital is the destination where opulent lifestyle, business, and entertainment options combine. At the heart of Sun Capital's active community is the Sun Piazza, an open space that comes with world-class retail, leisure spaces that allows outdoor living to spring to life amongst more than 1 million square meters of lush greenery.

YOUR  
RESORT  
EXPERIENCE  
BECOMES  
YOUR HOME





FRIENDS

IN WHICH

PLACES

# FRIENDS IN HIGH PLACES

Each hotel is housed in a stunning eleven story building and boasts over 200 luxury rooms. On one side are views of the Sun Piazza and the nearby Giza Pyramids, while on the other is one of Sun Capital's large central parks, giving luxury standards a new meaning.



*Fairmont*

**IHG**<sup>®</sup>  
InterContinental  
Hotels Group



HIGH  
STANDARDS  
OF CARE

# HIGH STANDARDS OF CARE



SUN CAPITAL



The international medical center at Sun Capital is a selection of choice for quality and integrated healthcare. Medical education and research, clinical & wellness services come together to deliver exceptional customer experiences, impacting every member of our community and society. In partnership with Proton Partners International, we are taking a step further towards having Buckingham Medical School as the International Hospital Operator.

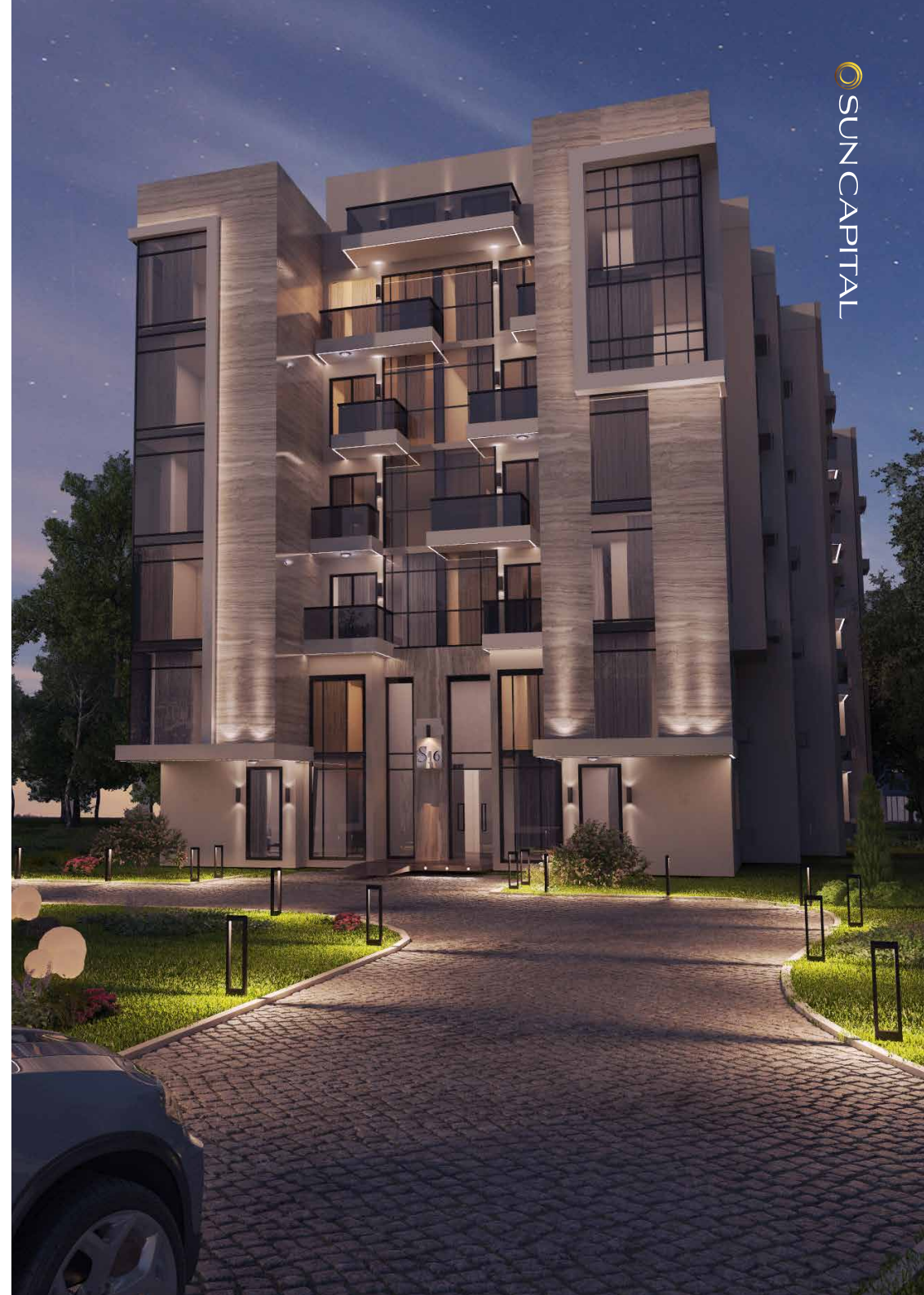
 **Proton  
Partners  
International**  
Proton Beam Therapy

HIGH  
PROFILE  
APARTMENTS



# HIGH PROFILE APARTMENTS

Sun Capital offers homebuyers grand family homes, stand alone villas, twinhouses, townhouses and apartments, all with access to the Sun Piazza. Each home is a fusion of luxury and nature with gorgeous green views greeting you at every turn. Come home to luxurious apartments designed to impress with elegantly finished exteriors of marble and metal cladding.





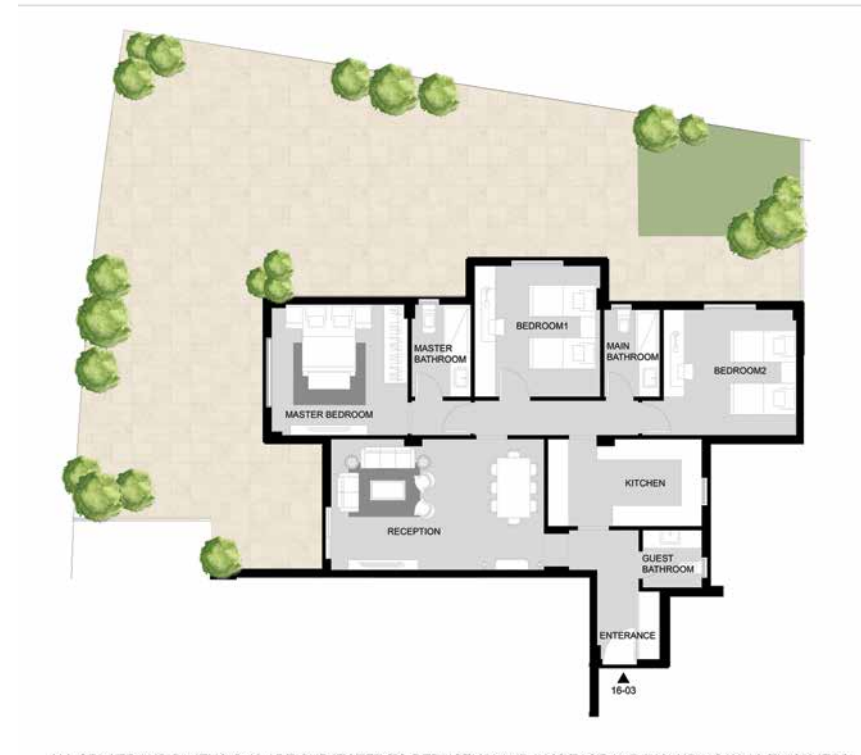




# T Y P E

# 16

GROUND FLOOR  
 TYPE: (16-03) - (16-05)  
 AREA: 138M<sup>2</sup>  
 GARDEN: 160M<sup>2</sup>



AREA	SPACE
RECEPTION	3.90 X 6.35
GUEST BATHROOM	1.80 X 1.95
MASTER BEDROOM	4.00 X 4.15
MASTER BATHROOM	1.80 X 2.90
BEDROOM1	4.00 X 4.05
BEDROOM2	4.00 X 4.05
MAIN BATHROOM	1.75 X 2.80
KITCHEN	2.60 X 4.65



- All renders and unit floors are for illustrative purposes only, and subject to change and amends by the developer
- Floor plans layout and furniture plans are for indicative purposes
- Diagrams are not to scale. Developer reserves the right to make alteration to the drawing

# T Y P E

## 1 6

GROUND FLOOR  
 TYPE: (16-02) (16-06)  
 AREA: 103M<sup>2</sup>  
 GARDEN: 55M<sup>2</sup>



AREA	SPACE
RECEPTION	6.20 X 6.25
MASTER BEDROOM	3.85 X 4.15
MASTER BATHROO	1.85 X 2.95
MBEDROOM	3.70 X 4.00
MAIN BATHROOM	1.85 X 2.65
KITCHEN	2.65 X 2.70

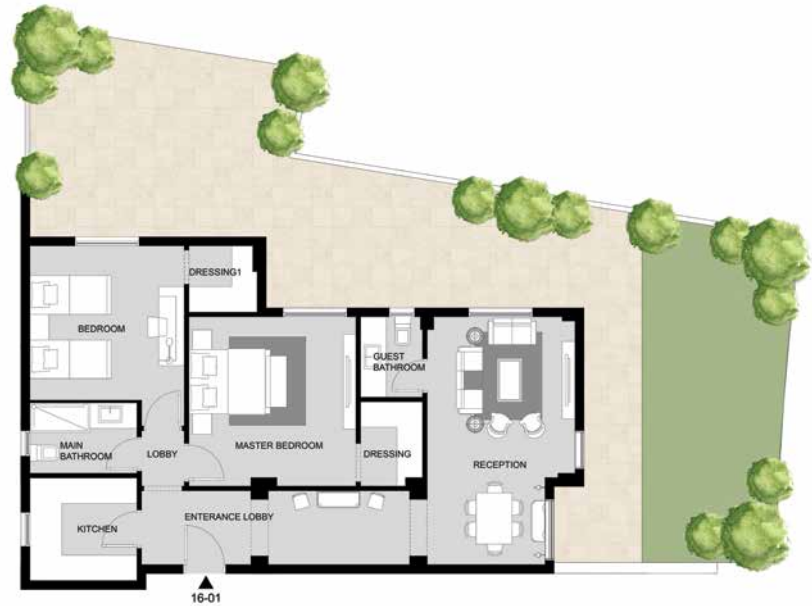


- All renders and unit floors are for illustrative purposes only, and subject to change and amends by the developer
- Floor plans layout and furniture plans are for indicative purposes
- Diagrams are not to scale. Developer reserves the right to make alteration to the drawing

# T Y P E

# 1 6

GROUND FLOOR  
 TYPE: (16-01) - (16-07)  
 AREA: 108M<sup>2</sup>  
 GARDEN: 89M<sup>2</sup>



AREA	SPACE
ENTRANCE	1.95 X 6.60
RECEPTION	3.70 X 6.20
GUEST BATHROOM	1.50 X 2.15
MASTER BEDROOM	4.00 X 4.25
DRESSING	1.55 X 2.15
BEDROOM	3.70 X 3.85
DRESSING1	1.80 X 1.85
MAIN BATHROOM	1.70 X 2.75
KITCHEN	2.70 X 2.80



- All renders and unit floors are for illustrative purposes only, and subject to change and amends by the developer
- Floor plans layout and furniture plans are for indicative purposes
- Diagrams are not to scale. Developer reserves the right to make alteration to the drawing

# TYPICAL FLOOR 16

TYPICAL FLOOR  
TYPE: (16-11) (16-17)  
AREA: 126M<sup>2</sup>



AREA	SPACE
ENTRANCE	3.15 X 3.60
LOBBY	2.00 X 3.30
RECEPTION	5.60 X 6.20
GUEST BATHROOM	1.50 X 2.15
MASTER BEDROOM	4.00 X 4.25
DRESSING	1.55 X 2.15
BEDROOM	3.70 X 3.85
DRESSING1	1.80 X 1.85
MAIN BATHROOM	1.70 X 2.75
KITCHEN	2.70 X 2.80



- All renders and unit floors are for illustrative purposes only, and subject to change and amends by the developer
- Floor plans layout and furniture plans are for indicative purposes
- Diagrams are not to scale. Developer reserves the right to make alteration to the drawing



# TYPICAL FLOOR

## TYPICAL FLOOR

TYPE: (16-12) - (16-16) / (16-22) - (16-26)  
 (16-32) - (16-36) / (16-42) - (16-46)  
 (16-52) - (16-56)

AREA: 108M<sup>2</sup>



AREA	SPACE
RECEPTION	6.20 X 6.25
MASTER BEDROOM	3.85 X 4.15
MASTER BATHROOM	1.85 X 2.95
BEDROOM	3.70 X 4.00
MAIN BATHROOM	1.55 X 2.65
KITCHEN	2.65 X 2.90



- All renders and unit floors are for illustrative purposes only, and subject to change and amends by the developer
- Floor plans layout and furniture plans are for indicative purposes
- Diagrams are not to scale. Developer reserves the right to make alteration to the drawing

# TYPICAL FLOOR 16

## TYPICAL FLOOR

TYPE: (16-13) - (16-15) / (16-23) - (16-25)  
(16-33) - (16-35) / (16-43) - (16-45)

AREA: 156M<sup>2</sup> - 160M<sup>2</sup>



AREA	SPACE
RECEPTION	3.90 X 8.25
GUEST BATHROOM	1.80 X 1.95
MASTER BEDROOM	3.85 X 4.00
MASTER BATHROOM	1.80 X 2.90
DRESSING	1.60 X 2.90
BEDROOM1	3.70 X 4.00
BEDROOM2	3.85 X 4.00
MAIN BATHROOM	1.80 X 2.75
KITCHEN	2.60 X 4.65



- All renders and unit floors are for illustrative purposes only, and subject to change and amends by the developer
- Floor plans layout and furniture plans are for indicative purposes
- Diagrams are not to scale. Developer reserves the right to make alteration to the drawing

# TYPICAL FLOOR

TYPICAL FLOOR  
 TYPE: (16-21) - (16-27) / (16-31) - (16-37)  
 (16-41) - (16-47)  
 AREA: 143 M<sup>2</sup> - 145 M<sup>2</sup>



AREA	SPACE
RECEPTION	3.90 X 7.95
GUEST BATHROOM	1.45 X 2.50
MASTER BEDROOM	3.85 X 4.15
MASTER BATHROOM	1.80 X 2.95
BEDROOM 1	3.70 X 3.90
BEDROOM 2	3.75 X 4.25
MAIN BATHROOM	1.80 X 3.20
KITCHEN	2.50 X 3.90



- All renders and unit floors are for illustrative purposes only, and subject to change and amends by the developer
- Floor plans layout and furniture plans are for indicative purposes
- Diagrams are not to scale. Developer reserves the right to make alteration to the drawing

# TYPPE

## 16

DUPLEX VILLA  
TYPE: (16-04)

AREA: 194M<sup>2</sup>

FLOOR: GROUND + FIRST  
GARDEN AREA: 44M<sup>2</sup>



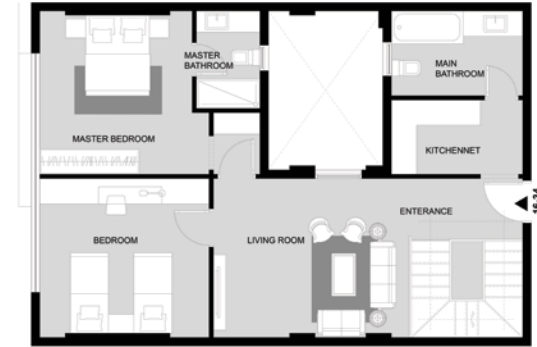
AREA	SPACE
RECEPTION	3.90 X 10.90
GUEST BEDROOM	3.05 X 4.10
GUESTBATHROOM	1.75 X 2.45
GUESTBATHROOM2	1.40 X 2.15
KITCHEN	2.60 X 3.40
MASTER BEDROOM	4.30 X 4.10
MASTER BATHROOM	1.75 X 2.45
BEDROOM 1	4.00 X 4.25
LIVING ROOM	4.05 X 7.40
MAIN BATHROOM	2.15 X 3.40
KITCHENETTE	1.85 X 3.40



- All renders and unit floors are for illustrative purposes only, and subject to change and amends by the developer
- Floor plans layout and furniture plans are for indicative purposes
- Diagrams are not to scale. Developer reserves the right to make alteration to the drawing

# TYPED 16

DUPLEX VILLA  
 TYPE: (16-24)(16-34)  
 FLOOR: SECOND + THIRD  
 AREA: 202M<sup>2</sup>  
 TYPE: (16-44)(16-54)  
 FLOOR: FOURTH + FIFTH  
 AREA: 201M<sup>2</sup>



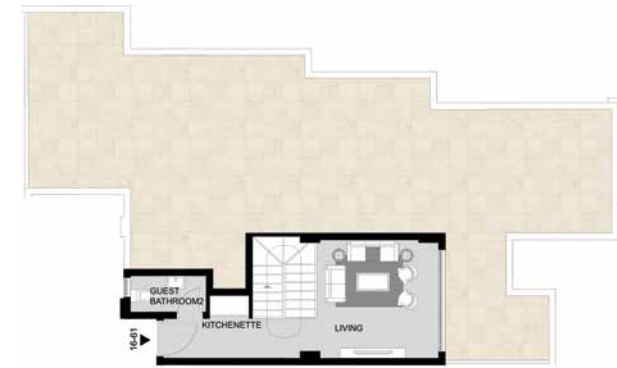
AREA	SPACE
RECEPTION	3.90 X 11.60
GUEST BEDROOM	3.85 X 4.10
GUESTBATHROOM1	1.75 X 2.25
GUESTBATHROOM2	1.75 X 1.75
BATHROOM 1	1.45 X 2.20
KITCHEN	2.60 X 3.40
MASTER BEDROOM	3.75 X 4.10
MASTER BATHROOM	1.85 X 2.70
BEDROOM	3.90 X 4.25
LIVING ROOM	4.05 X 6.65
MAIN BATHROOM	2.50 X 2.60
STORE	1.50 X 2.70



- All renders and unit floors are for illustrative purposes only, and subject to change and amends by the developer
- Floor plans layout and furniture plans are for indicative purposes
- Diagrams are not to scale. Developer reserves the right to make alteration to the drawing

# TYPE 16

FIFTH  
TYPE: (16-51) - (16-57)  
AREA: 143M<sup>2</sup> - 145M<sup>2</sup>  
PENT HOUSE: 38 M<sup>2</sup>  
OUTDOOR: 106M<sup>2</sup>



AREA	SPACE
RECEPTION	3.90 X 11.60
GUEST BEDROOM	3.85 X 4.10
GUESTBATHROOM1	1.75 X 2.25
GUESTBATHROOM2	1.75 X 1.75
BATHROOM 1	1.45 X 2.20
KITCHEN	2.60 X 3.40
MASTER BEDROOM	3.75 X 4.10
MASTER BATHROOM	1.85 X 2.70
BEDROOM	3.90 X 4.25
LIVING ROOM	4.05 X 6.65
MAIN BATHROOM	2.50 X 2.60
STORE	1.50 X 2.70



- All renders and unit floors are for illustrative purposes only, and subject to change and amends by the developer
- Floor plans layout and furniture plans are for indicative purposes
- Diagrams are not to scale. Developer reserves the right to make alteration to the drawing

# T Y P E

# 16

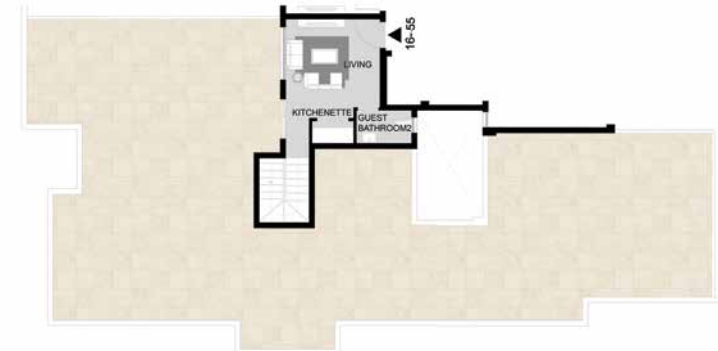
FIFTH

TYPE: (16-53) - (16-55)

AREA: 158M<sup>2</sup> - 160M<sup>2</sup>

PENT HOUSE: 35 M<sup>2</sup>

OUTDOOR : 194M<sup>2</sup> - 208M<sup>2</sup>



AREA	SPACE
RECEPTION	3.90 X 8.20
GUEST BATHROOM1	1.80 X 2.00
MASTER BEDROOM	3.85 X 4.00
MASTER BATHROOM	1.80 X 2.80
DRESSING	1.60 X 2.95
BEDROOM1	3.70 X 4.05
BEDROOM2	3.85 X 4.00
MAIN BATHROOM	1.80 X 2.80
KITCHEN	2.60 X 5.05
LIVING	3.90 X 4.00
GUEST BATHROOM2	1.70 X 2.35
KITCHENETTE	1.10 X 1.70



- All renders and unit floors are for illustrative purposes only, and subject to change and amends by the developer
- Floor plans layout and furniture plans are for indicative purposes
- Diagrams are not to scale. Developer reserves the right to make alteration to the drawing

# OUR PARTNERS

## MAIN PARTNERS



## CONSTRUCTION PARTNERS

